



Adobe FrameMaker Topics

Article created: 99-12-01

Contents:

- [FrameMaker Document and Layout Structure](#). For all that the most central concept in FrameMaker is the Frame, the existing documentation is thoroughly foggy regarding the precise nature of the Frame types and the relationships amongst them. Here is a first pass at rectifying that shortcoming.
- [FrameMaker MIF File Browser](#). In a quest to understand FrameMaker document conceptual structure, I wrote this little browser for Maker Interchange Format (MIF) files. Free download.
- [FrameMaker 5.5.6 Product Structure](#):
Understanding the purposes and roles of the raft of components that are delivered (or not) with the FM package.
- [Component-by-component Versions and Recommended Updates](#).
Since FM is currently shipping with components that are up to *3 1/2 years old* and major versions out-of-date, the conscientious installer will of course be compelled to make sure that the installation is updated to the most-preferred more-recent version level. This page is an attempt to survey what that might be.

Helpful FrameMaker-Related Sites, Pages, Tools

At Adobe:

- [FrameMaker Direct Support Numbers](#) (currently all these do is put you on hold indefinitely, but maybe that's temporary)
- [Adobe HQ Numbers](#) (San Jose actually has humans).
- [Adobe FrameMaker 5.5 Home](#)
 - [Adobe FrameMaker - Resources](#)
- Specific Topics
 - [Type 1 Fonts TrueType Fonts and ATM for Windows General Information - Support Database](#)
 - [TrueType Fonts in Windows General Information - Support Database](#)

FrameMaker-Related List Servers and their home sites

- [Worldwide Online FrameMaker User Network](#)
 - Starting point for FrameUsers email list server
 - Archived at: framers@eGroups.com
 - WAIS database of archive [here](#).
- framers@omsys.com: (From FrameMaker for Dummies): to subscribe send email to majordomo@omsys.com. In the body of the message put:
subscribe framers

FrameMaker-Related Sites

- [Dionis](#): Ari's Link tool: and other tools.
- [FrameExpert/Carmen Publishing](#) (Rick Quattro) FrameScript scripts and other tips.
- [FrameScript](#): The URL framescript.com is supposed to be correct but it was not findable when I tried.
- [InFrame - The FrameMaker Online Magazine!](#)
- [Silicon Prairie](#) (Steve Kubis) AutoText and IndexTools.
- [MicroType](#) FrameMaker courses and articles. FrameMaker-to-Acrobat resources. (Shlomo Perets)
- [Omni Systems Inc](#) mif2go: "Fast, accurate conversion from FrameMaker MIF to HTML, printable Word RTF, and WinHelp!"
- [Publish.com](#)
 - [Publish RGB Software Closet](#) -- PC Updates including Font Browser software, FrameMaker templates etc.
- [Sandybrook Software - Enhance for Adobe FrameMaker](#) Outlining plug-in for Frame, for Word-like outlining capabilities and/or non-WYSIWIG editing.
- [Scriptorium Publishing Services](#) (Home of Sarah O'Keefe and FrameMaker for Dummies book)
 - [Resources](#) page
- [Frank Stearns Associates - Tools for Adobe FrameMaker \(main page\)](#) IXgen index generator
-

PDF/Acrobat Related

- MicroType -- see above
- [PDFzone.com](#)
- [Planet PDF - PDF & Acrobat Info Articles News Links and Resources](#)
 - [Adobe PostScript Printer Drivers ...FrameMaker & Acrobat 4.05](#)

Font browser/manager software

- [Typograf - font management for TrueType and Type 1](#) -- this one can browse uninstalled PS Type 1 fonts!
- [Moon Software - Font Xplorer FontLoader](#)
- [Sunshine Software Home Page - home of FontFinder](#)

Miscellaneous

- [Ideography: Conrad Taylor's Web site](#)

Go to: 

Document Layout Concepts (Frames and All That)

Article created: 2000-01-15

The primary reason to use Framemaker is the power that it offers in managing long and possibly technically complex documents. And while detailed control of the formatting of every paragraph and character is important, the overarching concern is overall structure and layout on a document- or book-wide basis.

As the product's name announces, at the heart of FrameMaker's structure and layout paradigm is the "Frame". Yet I found the user documentation on the actual subject of frames to be perplexingly opaque. Frames are mentioned here and there, and what is described is not incorrect. But nowhere in the user docs is there a concise and complete discussion of this central FrameMaker feature -- which tends to stall efforts to actually get started on using FrameMaker in a productively-planned manner. Indeed, it is tempting to speculate that the FM learning curve is infamously steep precisely *because* this conceptual core is so ill illuminated.

So, determined to dispell the fog (at least for me!), I resorted to studying the very helpful Programmers' Reference and Guide, and built a MIF-Browser tool to get to the bottom of the matter. Herewith is an effort to clarify what to me seem the essentials needed for productive use of FrameMaker, condensed in one place.

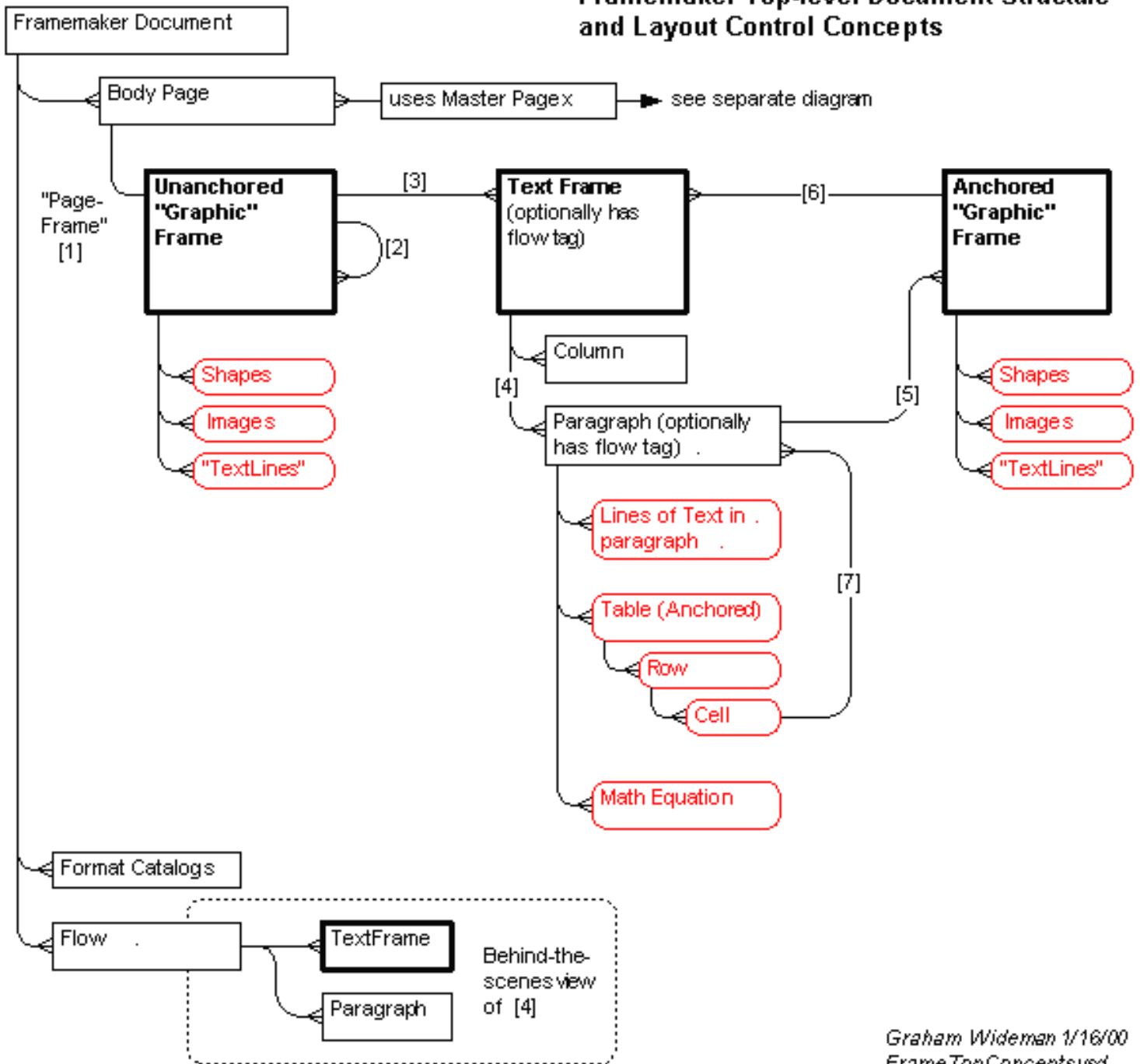
Top Level Document Structure and Layout-Control Concepts

The following drawing summarizes the top level concepts essential to mastering FrameMaker's layout and document structuring environment, including the three varieties of Frame and how they relate to one another and "contain" the actual visible elements that will appear on the finished pages.

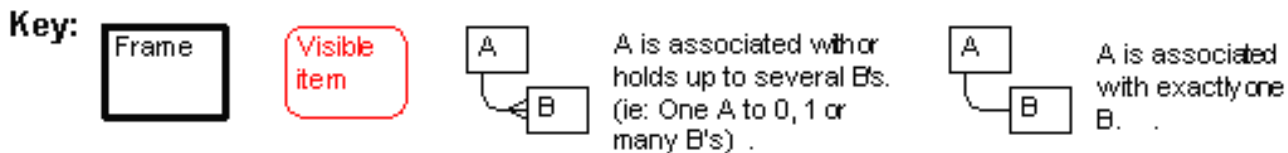
The simple diagram notation is borrowed from the field of data modeling where it is used by software architects as part of the process to concisely document and communicate the important structure of an application's data. (It's also similar to the object diagrams provided with Microsoft applications for users to develop Automation macros and programs.) For some readers it will be intuitively straightforward -- others may wish to refer to the key below. In the ensuing discussion I describe each of the important relationships, after which the less-familiar readers will hopefully also find the diagram an effective distillation of the descriptions.

Because it's inconvenient to view this diagram and the following discussion at the same time, you may wish to print the diagram, or open two browser windows.

FrameMaker Top-level Document Structure and Layout Control Concepts



Graham Wideman 1/16/00
FrameTopConcepts.vsd



Discussion:

Frame Types: There are three kinds of Frame:

- **Unanchored ("Graphic") Frame:** Can hold:
 - Geometric shapes

- Imported images
- Single Text Lines
- and of particular note, Text Frames
- **Anchored ("Graphic") Frame.** Can hold:
 - ... same items as Unanchored Frames
- **Text Frame** (can't be anchored per se). Can hold:
 - Text (via Paragraph),
 - possibly (usually) assigned by Flow
 - organized by Columns
 - Anchors leading to Anchored Frames, Tables, Math Equations.

Note that in Frame-speak, the term "graphic object" includes not only geometric shapes and imported images, but also single Text Lines, and of particular note, Text Frames. From this it follows that the "generic" Anchored and Unanchored Frames are referred to collectively (and in my opinion unintuitively) as Graphic Frames, as opposed to the "specialized" Text Frame.

"Anchored": means that the object does not have a fixed position on the page, but rather is "anchored" to a particular position in the text. If the text surrounding the anchor moves "up" or "down" (eg: the users adds or deletes text preceding) then the anchored object will move accordingly. One of the types of Graphic Frame is Anchored, and Tables also are Anchored.

(Note that the term "anchored" is potentially counter-intuitive to the new user. Unlike anchoring a boat, the effect is not to hold the object in a fixed position, but rather to *moor* or *harness* it to something else that might move.)

Tour of the Diagram's Numbered Relationships

[1] Although not exposed directly to the user, each Page employs a top-level Unanchored Frame (the "Page Frame") which is the same size as the page, and is used as the overall container for all the other objects on the page. While Frame user docs talk about placing an object "directly on the Page", they are really talking about placing the object in the Page Frame. The distinction is minor, except that it helps to understand that the Page Frame behaves like any other Unanchored Frame -- learn about one and you've learned the other too.

[2] Unanchored Frames can contain other Unanchored Frames -- ie: they can be nested. In fact they can only be nested, as there is nowhere else to place an Unanchored Frame. (Note that where I have drawn direct or indirect loops on this diagram the meaning is this: a particular object may directly or indirectly contain other objects *of the same type*, but, as is probably obvious, it is prohibited from containing itself!)

[3] An Unanchored Frame can hold Text Frames.

[4] A Text Frame can hold Paragraphs, which usually hold lines of text. The relationship [4] is actually an abbreviation for what's really happening behind the scenes, detailed next to the "Flow" object.

Behind the scenes, FrameMaker actually uses Flow objects to collect paragraphs that belong together. When a Body Page is initially laid out (manually, or via Master Pages), each of its Text Frames is associated with a

particular Flow, by way of its "flow tag". Paragraphs typed or copied into a particular Text Frame become members of the flow determined by that Frame's flow tag.

As the text is inserted or deleted, paragraphs are free to appear in (i.e.: "flow to") previous or subsequent Text Frames having the same flow tag. If there is only one Text Frame associated with a particular flow -- as in the case of an unconnected side-bar -- then of course FrameMaker performs no "flowing". In these cases the flow can be simply unnamed (though it has a unique ID behind the scenes.).

All that said, for the purposes of an initial understanding, the simplification of "Paragraphs contained in Text Frames" is close enough.

[5] A Text Frame can hold (via anchors) Anchored Frames.

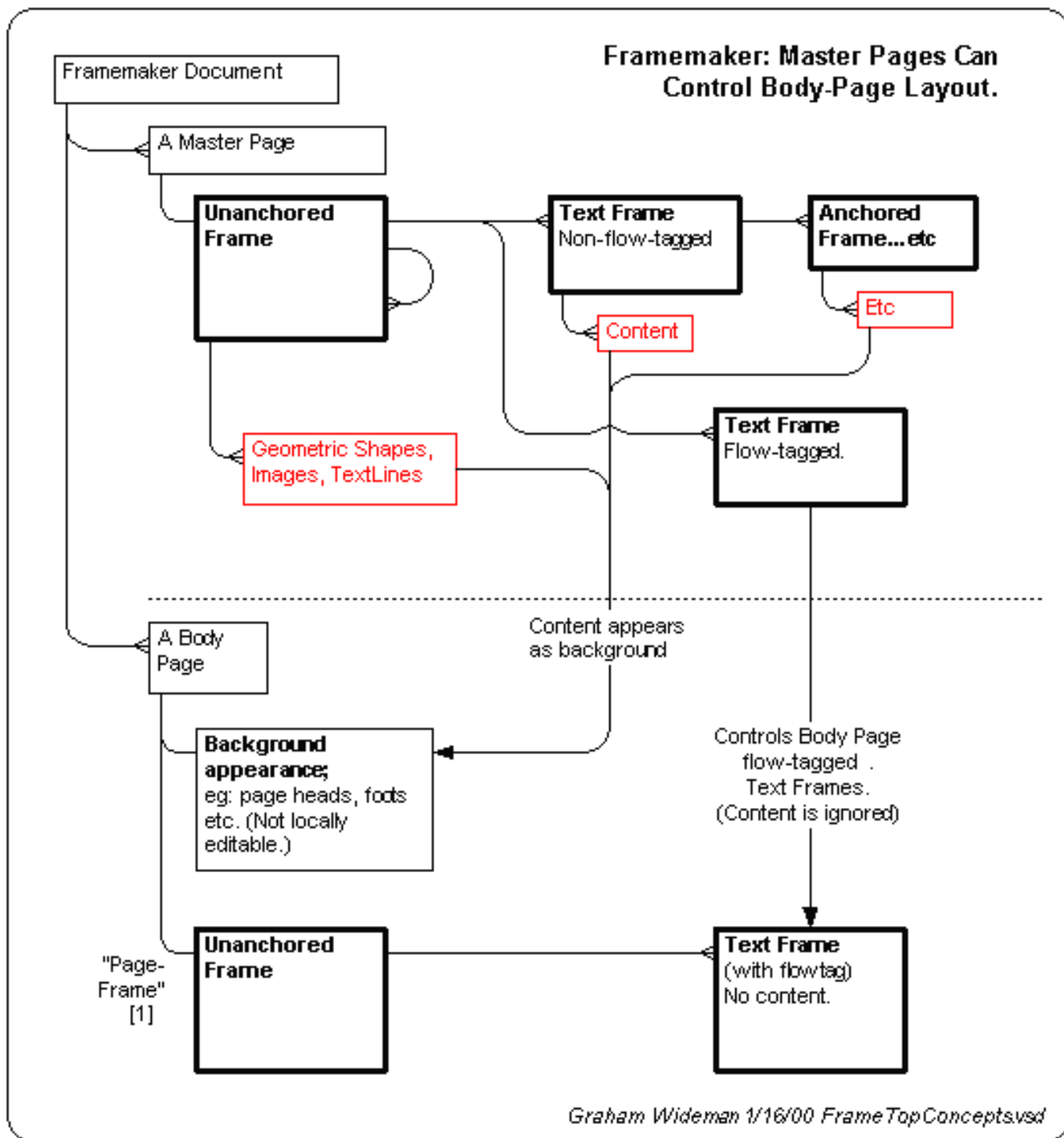
[6] An Anchored Frame can hold Text Frames. (So note that [5] + [6] means that you can nest TF--AF--TF--AF etc if you want, though you can't *directly* nest a Text Frame inside a Text Frame.)

[7] A Table's Cell holds Paragraphs... which can hold anything a regular Paragraph can hold (EXCEPT that paragraphs in a table *can't* hold another Table directly -- but *can* hold an Anchored Frame which can hold a Text Frame and *then* another Table.)

Master Pages Can Control Body-Page Layout

It is possible to ignore Master Pages, and create and position all needed Frames "manually" on the Body Pages (using only the objects and concepts diagrammed above). However, in most scenarios you will want to employ Master Pages to control as much of the repetitive Body Page layout as possible.

A Master Page contains just the same kinds of objects as described above for Body Pages, but instead of appearing directly they control various aspects of any Body Page based on the particular Master Page.



The gist of the diagram is the covered in the following two points:

- **Flow-tagged Master Page Text Frames** define flow-tagged Text Frames on the corresponding Body Pages.
 - Once a Body Page is created from Master Page, those Body Page Text Frames can be adjusted if needed, they are not forced to stay the same as the Master page. But you'll want to study further to understand what happens if you later "reapply" the Master Page.)
 - Any content in the flow-tagged Master Page Text Frames will not appear on the Body Pages
- **All other features on the Master Page** will appear as uneditable background for the corresponding

Body Pages.

- Embelishment: The Master Page non-flow-tagged text can usefully contain variables, so though not editable on Body Pages the appearance may automatically change from page to page -- as for page number or chapter name in page header or footer frames.

From Here...

If you actually use the above conceptual initiation as an introduction to FrameMaker concepts, then you might proceed along one of the following lines:

- Detailed Formatting: What properties of what objects can be formatted; the Format Catalogs etc
- Template Files: For further top-down control of layout and formatting
- Book-Level Issues
- Reference Pages

Go to: 

The above screenshot pretty much says most of what there is to know. You load in a MIF file, and MIFBrowse presents it in both tree and text forms. While navigating in either you may sync the other view.

Possible Uses

Several kinds of uses come to mind:

- **When writing code to generate MIFs:**
 - You can use MIFBrowse to inspect existing FrameMaker documents to see how the MIF structure represents particular effects of interest.
 - You can use MIFBrowse to inspect the output of your programs. MIFBrowse won't guarantee a valid MIF (it knows a bare minimum about syntax and nothing about legit keywords), but it will allow you to catch obvious bracket nesting problems, and to check that what you thought your program was generating is what is actually generated.
- **When troubleshooting FrameMaker document problems,** like searching for references to missing paragraph or table styles, and oddball structural problems.
- **Instruction.** When teaching FrameMaker users how to think about FrameMaker documents, it can be useful to tour the underlying structure that's exposed via MIF files.

Download, Version History and Issues

Date	Version	Download	Description	Outstanding Issues
2003-09-25	0.182	mifb0182.zip	Zip file containing MIF Browse for W95 through WinXP. Added features: <ul style="list-style-type: none"> • Status bar shows range of lines that correspond to selected tree node • MIFBrowse now accepts a command line argument telling file to open: mifbrowse somefile.mif 	
2001-11-22	0.160	mifb0160.zip 300K	Zip file containing MIF Browse for W95 through WinXP. Added features: <ul style="list-style-type: none"> • Minor enhancement to Search window: has stay-on-top. 	

2000-03-20	0.150	Not avail	<p>Zip file containing MIF Browse for W95/98 and NT 4. Added Features:</p> <ul style="list-style-type: none"> • File loading now properly deals with non-PC files (ie: MIF files from Mac or unix that have not had their line-break characters fixed.) • Faster file load • MIF parser now deals with multiple objects per line of text. This case does not occur in MIFs saved from FrameMaker, but is legal and may be created by hand (or by custom programs). It also happens to be present in some of the MIF samples shipped with FM, such as barchart.mif. • Faster text-to-tree sync • Search function 	MIF Parser does not know about the define() and include() statements, mainly because I don't have a working sample. If someone would like to send me one, I'll incorporate that feature.
2000-01-18	0.121	Not avail	<p>Zip file containing MIF Browse for W95/98 and NT 4. Added Features:</p> <ul style="list-style-type: none"> • Uses non-Microsoft memo control, so file size limit on W95/98 overcome • Can now drag MIF files from Windows Explorer. 	
2000-01-16	0.100	Not avail	Initial release. Turns out that W95/98 native memo control imposes unusably small file-size limit (doh!), so this version was usable only on NT.	

Installation

1. Create a directory somewhere for it, put the zip file there and unzip. Choose a directory to which the application will be able to write (it keeps track of things like window size and position in an INI file in its home directory).
2. OK, it's now installed :-). No special installation is required, it is a single executable and doesn't use the registry so it's easily uninstalled by just deleting it.
3. Run it by clicking on MIFBrowse.exe in Windows Explorer. If you are enthusiastic you can later create a shortcut and or Start Menu item for it using the usual Windows methods.

I suggest trying it on a smallish MIF first, to get the hang of it. Depending on the speed and memory capacity of your PC, it could slow down on larger MIFs.

Special Features

Verbose Nodes/"Peek Inside"

The only feature of significant unobviousness is the "Peek Inside" feature which adds some identifying information to many of the treenodes in order for you to see whether this is the object you want to open. In the screenshot above you can see that each Tbl and Page node surfaces things like the table caption or page type and name. This way you don't have to open each node to see what's inside. This is probably the most important feature in making a MIF more navigatable.

The particulars of which attributes are surfaced is controlled by a file called MIFBrowse_NodeInfo.ini. The default file included in the download includes comments and examples which you can modify if you wish.

You can turn off the display of this extra info using the Verbose Nodes checkbox, in which case the treenodes become much more similar to the MIF text.

No nodes are added or removed via the Peek Inside feature, it merely displays extra info for particular nodes.

Reload

In some scenarios, you'll be wanting to inspect the contents of a particular MIF file over and over again, as you perhaps generate new versions of that file with a program you are developing, or make incremental changes in FrameMaker. To quickly load the same file into MIFBrowse, click the Reload button.

Browse Several Files

Although MIFBrowse can only open one file at a time, you can run several instances of MIFBrowse to achieve pretty much the same effect. Note that when quitting, MIFBrowse saves a few settings in MIFBrowse.ini. That file will reflect whichever instance of MIFBrowse last quit.

Range-of-Lines

Added in Version 0.181: The status bar shows the range of lines that correspond to the node selected in the tree view. Useful scenario: with most nodes closed, select high level nodes, and by watching the line-range indicator you can tell which nodes contain a large amount of content.

Future

As of 2009, I haven't used FrameMaker in five years... so this tool is really just here in case anyone can still make use of it.

Developer Notes

Written in Borland Delphi 5 (and recompiled in 6), with several fruits of the global developer community which supports this environment:

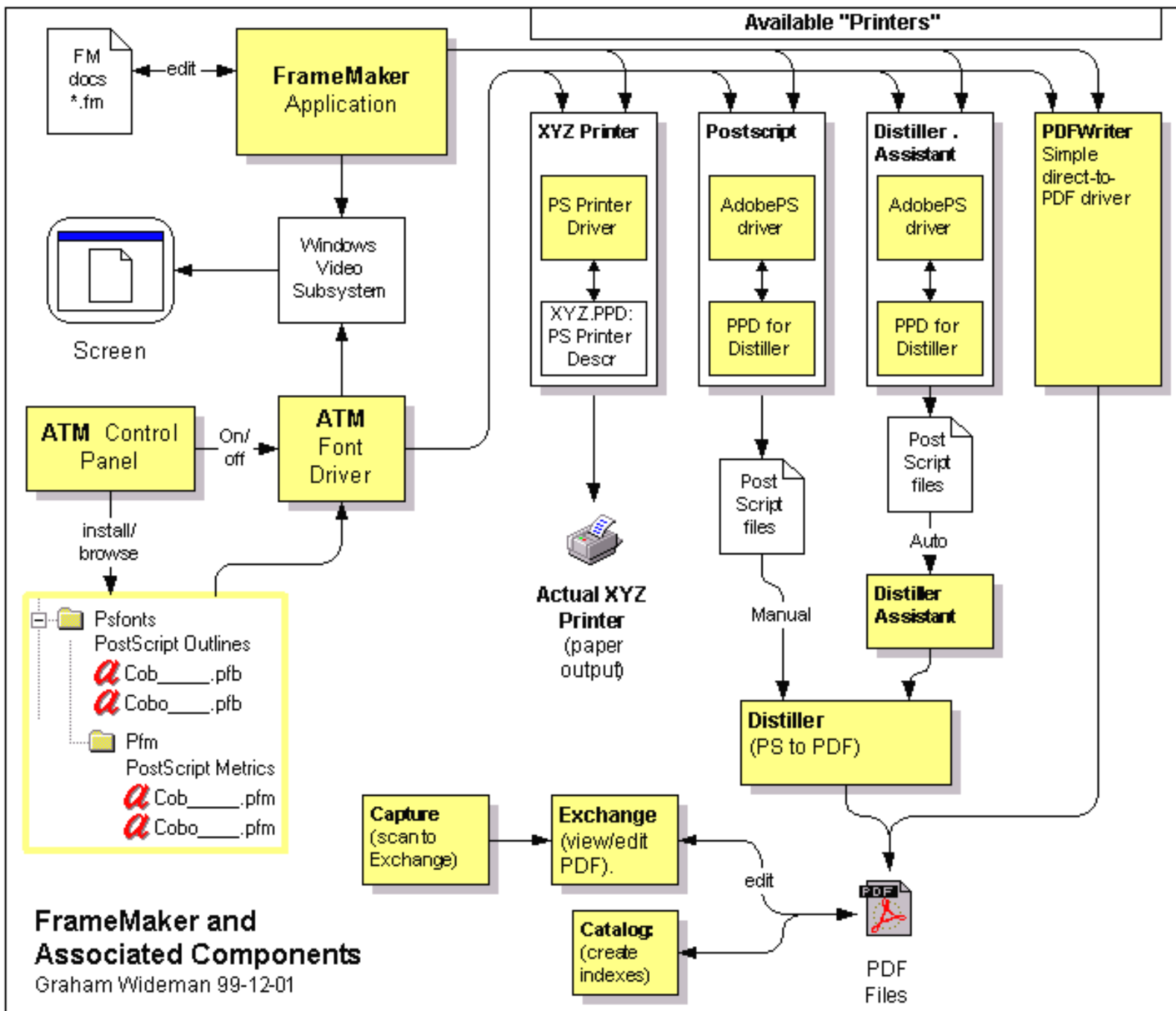
- [TPlusMemo from ECM](#) (Quebec, Canada)
- Drag and Drop Suite from Angus Johnson and Anders Melander (An Australia/Denmark collaboration with some assistance from [my Delphi Drag and Drop tools](#)). (Now included in Delphi, or search [Torry's](#) for latest..)
- [TDCTree](#) (Dream InfoTree) from [Dream Company](#), a tree control not based on MS's TreeView, and hugely faster for a number of operations. (Ukraine).

Go to: 

FrameMaker 5.5.6 Product Components

Article created: 99-12-01

This is my current model of the components which compose the FrameMaker 5.5.6 product, and their functions. Open to critique.



All of the components marked in yellow are either included in the FM package, or at least supposed to be.

More Notes:

ATM

(Excerpts from Techref.wri for W95 and NT)

ATM consists of two main components: the ATM Font Driver and the ATM Control Panel. The ATM Font Driver allows PostScript® Type 1 fonts to be displayed on screen and printed to non-PostScript printers. The ATM Control Panel is responsible for installing and removing PostScript Type 1 fonts and creating multiple master instances.

Win 95

The Font Rasterizer is made up of two files: *ATMSYS.DRV* and *ATM32.DLL*. The file *ATMSYS.DRV* hooks into the Windows 95 operating system via the `system.driv=` line in the [Boot] section of the *SYSTEM.INI* file. During the Windows boot process this driver loads the file *ATM32.DLL*. *ATM32.DLL* provides the services for using PostScript Type 1 fonts in applications, such as listing PostScript fonts in an application's font menu, providing character metric information to applications, and rasterizing PostScript fonts to display and printer devices.

The ATM Control Panel consists of a single program file: *ATMFM.EXE*, located in the ATM program folder. The default location is `c:\psfonts`. When you install fonts using the ATM Control Panel it stores this information in a file called *ATMREG.ATM*, located in the Windows folder.

If your document contains a multiple master instance that you don't have installed on your system, ATM can generate an instance on-the-fly, provided the multiple master base font is available. Please refer to the User Guide for more information on these features. The ATM Read Me lists the applications that are currently known to support this feature.

Win NT

The ATM for NT Font Driver is contained in a single file: *Atmdrvr.dll*. This file is located in the Windows NT System32 folder. The main function of the ATM Font Driver under Windows NT 4.0 is to rasterize characters of PostScript fonts.

Due to the fact that ATM for Windows NT does not intercept Windows system calls like previous versions of ATM, ATM for Windows NT does not generate custom multiple master instances on-the-fly, like ATM for Windows 95. Adobe is working with Microsoft to allow the ATM Font Driver to perform this feature in a future version of Windows NT.

The ATM Control Panel consists of a single program file: *Atmfm.exe*, located in the ATM program folder. The default location is `X:\Program Files\Adobe Type Manager`, where X is the drive where Windows NT is installed. When you install fonts using ATM, it stores this information in a file called *Atmreg.atm*, located in the Windows NT folder.

"Printers"

As pointed out to me by Jason Aiken, the PostScript "printers" that show up in the Windows Printers window represent combinations of a particular driver with a particular PPD file and a particular destination (port or file). Now, one would think that in the PostScript world one would only need a single actual driver, and all the rest of the variation between printers or destinations would be accommodated by the PPD. However, this appears not to be the case -- some purposes need one driver and some another.

So, exactly which version of which driver plus which version of which PPD is a matter of critical interest in creating different deliverables. (And I've sketched these in pretty vaguely above -- for more details see the page on Component versions.)

Distiller Assistant

Note that the only function of Distiller Assistant is to monitor one or more directories to see if any xxx.ps files have been dropped in there, and if so to send them to Distiller. To feed that mechanism, Acrobat installs a "printer" instance

labeled "Distiller Assistant" which I'm pretty sure should be almost identical to the one used for manually creating xxx.ps's, with the exception that it outputs to a directory that DA monitors.

Go to: 



Last edit: 05-03-17 Graham Wideman

FrameMaker 5.5.6 Component Versions

Article created: 99-12-01

This page is my effort to discover and document how to transform the currently shipping FrameMaker 5.5.6 into a form that is actually usable and hopefully stable.

To that end, this page lists all components that compose FrameMaker 5.5.6. I would like to accumulate such advice on this page -- please send input and I'll add it. (grahampub@wideman-one.com). This info is for Windows platform, particularly NT4.

List of Components Covered

- Product CD Info
- FrameMaker Application
- ATM
- Fonts (Type On Call)
- Postscript Printer Drivers etc
- Acrobat
 - Distiller
 - AdobePS Driver
 - Distiller PPD
 - Distiller Assistant
 - PDFWriter
 - Exchange (PDF Viewer/Editor)
 - Capture
 - Catalog

For further info on what role these bits and pieces play, see the [diagram here](#).

Component by Component

The following is a list of what got installed on my NT4 SP3 box, and various people's recommendations about updating. As you can see, there are still a lot of gaps regarding what to update, and what drivers, PPDs and versions thereof are the ones to get.

FrameMaker Product CD			
Purchased Retail	11/99	.	.

Version Shipped	5.5.6	.	.
Date	9/98	.	.
Newest File	9/98	.	.

FrameMaker Application

Version	5.5.6p145	9/14/98	.
---------	-----------	---------	---

Adobe Type Manager

Product Version Shipped	ATM 4.0 Lite	.	.
Executable version	4.0 Build 90 Lite Jun 17 1997	.	.
Atmdrvr.dll	4.0 Build 85 Jun 17 1997	.	.
Current Product Version of ATM Deluxe	4.0	.	.

Update Recommendations:

1. Adobe obviously would like to sell customers the Deluxe version as a replacement for Lite. Extra features include the ability to manage TrueType fonts along with PostScript Type 1 fonts. I haven't heard a compelling argument yet from the point of view of what ATM Deluxe does for you. However, from the point of view of what Adobe products fail to do with TrueType fonts.....

2. I wondered why bother with the intrusion of the ATM apparatus along with PostScript fonts at all. To this line of thinking I have received responses like:

2a: The processes for creating PS for printing and for creating PDFs fails in mysterious ways with TrueType fonts, so best to stick with PostScript fonts.

2b: [Adobe Support Doc 321530](#): "When you use Acrobat Distiller, however, text formatted with TrueType fonts may not be searchable, depending on how the font information was written into the PostScript file." (At first I thought that meant that the user couldn't search for "text using XYZ font" -- no, it means that a search for target words in text that happens to be formatted with a TT font may fail!).

Type On Call

This product is called on by the FrameMaker installation to install several Postscript fonts that are essential to FrameMaker, and in addition 220 free fonts. However, according to Adobe, the product was discontinued, so they just started omitting it from the FM package. The installation instructions were not changed, so basically it's not possible to complete the documented FrameMaker installation process.

(FrameMaker can be gotten to a running state by installing the few fonts that are provided with Exchange, though that strategy is far from obvious if you're trying to actually follow the manual.)

12/1/99: I have contacted Adobe, and they are now looking into this problem.

12/2/99: Adobe will be sending me a copy of Type On Call.

Acrobat

Overall Version shipped	3.01	.	.
Current Version	4.05	.	.

Note that Acrobat 3.0 was the name of a bundle of separate components listed below. As I understand it now, in 4.x several of these have been combined.

Acrobat Exchange

Version Shipped	3.0	6/16/97	.
-----------------	-----	---------	---

Update Recommendations:**Acrobat Catalog**

Version Shipped	3.0 (though the Start Menu says 3.01)	7/25/96 (!)	.
-----------------	---------------------------------------	-------------	---

Update Recommendations:**Acrobat Capture**

Version Shipped	3.0 (though the Start Menu says 3.01)	exes and dlls 1994 thru 1997	.
-----------------	---------------------------------------	------------------------------	---

Update Recommendations:**Acrobat Distiller**

Version shipped	3.01	6/17/97	.
-----------------	------	---------	---

Update Recommendations:

Jason Aiken: "Update to 3.02"

Fred Ridder: "And I wholeheartedly second the advice to use Distiller 3.02 rather than 3.01 (which can cause all sorts of weirdness if you use TrueType fonts)."

[Adobe Y2K statement](#): "Adobe Acrobat 3.x exception: Distiller 3.0x for Windows and Unix platforms, when run by itself after December 31st 1999 puts an incorrect date in the internal Document Information Creation Date field of the PDF file. Suggestion: For Windows, upgrade to Acrobat 4.0. For UNIX a patch to correct this problem will be posted shortly." [it has been posted I believe.] [thanks Jeanette Feldhousen]

Acrobat Distiller Assistant

Note: Confusingly there's the Distiller Assistant executable (that monitors a directory for PS files to send to Distiller), and then there's the Printer Instance called Distiller Assistant (to which you print if you want DA to see the PS files).

Version Shipped	3.0.1	.	.
Printer instance uses driver:	MS PostScript Driver V4.0 (?)	.	.
Uses PPD	???	.	.

Update Recommendations:**AdobePS PostScript Driver (to feed PostScript to Distiller)**

Version Shipped	PostScript Printer Driver Version 5.0 (135)	.	.
-----------------	---	---	---

Update Recommendations:

From Jason Aiken:

- Win95/98: (according to Framers list experts...)
 - If you're using Acrobat (Distiller) 4.05, then use
 - AdobePS 4.3.1
 - Adist4.ppd
 - If you're using Acrobat 3, use the Distiller 3.02 update available from the website and
 - AdobePS 4.2.6
 - Adistill.ppd
- Win NT: If you're on NT, don't use the AdobePS 5.1.1. Use AdobePS 5.1 or 5.0.x. Reinstall the AdobePS 5.1 using the Adistill.ppd located somewhere in your Acrobat 3.0 folder. Hopefully, this one has a more recent date. Use the AdobePS 5.1 for NT (DON'T EVER INSTALL 5.1.1 !!!)

From Adobe site:

[Note: If you use Adobe FrameMaker or FrameMaker+SGML 5.x in Windows NT, you should use AdobePS 5.1 instead of AdobePS 5.1.1](#)

Distiller PPD (for use with AdobePS)

Version Installed	DEFPRT2.PPD v3.7	.	.
Also supplied	Adistill.ppd	10/30/96 (!)	.

Update Recommendations:

See the AdobePS recommendations. DEFPRT2.PPD v3.7 is apparently ancient or inapplicable. What got installed looks to be way off the mark compared to current advice.

Driver to use with actual Postscript Printer

Recommendations: I actually don't have this area figured out at all yet. I'm assuming that I should use either an Adobe or Microsoft driver, with a PPD supplied by the printer vendor... but as yet I haven't researched the details.

Acrobat PDFWriter

Version Shipped	3.02	.	.
Date	7/11/97	.	.

Update Recommendations

Sarah O'Keefe: "I strongly recommend that you avoid using PDFWriter" due to no embedded fonts, and poor control of image resolution.

.	.	.	.
---	---	---	---

Comments

Despite trying to stay level-headed through the process of getting this delicately balanced house of cards to stand up, I just have to throw in a comment on this mess -- I can't help but feel that FrameMaker purchasers are getting seriously abused here. I for one do not appreciate getting a package where:

1. ... the vendor has knowingly subtracted an essential CD from the package with apparently no system

in place to ensure that the installation procedure can still be carried to a successful completion.

2. ... hasn't bothered to supply the current versions of components even as of the CD date, let alone some time in the last six months.

3. ... has no coherent guide as to what the immediately-required update steps and preferred rev levels are for all components. (John Dupre, Worldwide Product Support Manager for Frame at Adobe has said he will request such a list from Frame Engineering.)

Go to: 