

5

FM-start-options (UI for maker.ini)

Overview

Proposed AHK script to set the start up options in FrameMaker for the current session. This mainly are settings in the maker.ini file.

Contents

Overview	2
Assumptions for this utility	2
User interface	3
Settings prior to start of FM	7
maker.ini master file	7
maker.ini user file	7
Other files in User directory	8
Settings in FrameMaker	8
MIF snippets	8
Implementation	9
Specials to consider	9
fm-start-options.ini	9
Handling MIF snippets	12

Note: *This proposal is not yet fully worked out - in particular the ahk script is not functioning beyond the user interface. It is also not adapted to FM version > 8.*

Overview

Consultants and editors working on more than one project or even for more than one client need various set/ups of their FrameMaker environment⁷⁾:

- Different user interface language, such as English and German: e.g. for help on the phone you need to know the menu names etc.
- Different levels of FrameMaker. For example, one customer may require strict use of FM version 8.0 while the other sticks to FM 9.
- For consulting on the phone you use a plain vanilla installation for FM, but for your daily work modified dialogues etc. are your needs.

This leads to a set of FM installations, which fortunately are possible in Windows. In this respect FrameMaker is a very friendly program.

The utility `fm-startup-options` allows to control FrameMaker variants which are stored in a particular file structure and also handle the switching between these. It also allows to start every FM session with particular settings which normally would require changes in the `maker.ini` files.

Assumptions for this utility

	For demonstration I use my setup:
FrameMaker installations	<ol style="list-style-type: none"> 1 English version FM 8.0 in H: \Adobe\framemaker. 8en 2 German version FM 8.0 in H: \Adobe\framemaker. 8de
FrameMaker modifications	<p>Both variants include modifications such as Microtype's enhanced toolbar, modified dialogues and additional plugins. Hence for some installation directories and files there exist additional items, for example for the <code>Plugins</code> directory:</p> <pre>H: \Adobe\framemaker. 8en\fm\ini t\Plugins H: \Adobe\framemaker. 8en\fm\ini t\Plugins. ori H: \Adobe\framemaker. 8en\fm\ini t\Plugins. ddd</pre> <p>The first one is the current directory, if FM 8.0 is started. To get the original setup, the contents of <code>...Plugins</code> is deleted and replaced by the contents of <code>...Plugins. ori</code>. To get the modified version of FM running, <code>...Plugins. ddd</code> is copied into the <code>...Plugins</code> directory.</p> <p>These variants (<code>ori</code>, <code>ddd</code>) exist for the following files and directories: <code>maker. ini</code>, <code>fmdlg. dll</code>, <code>CustomUI. cfg</code>, <code>Plugins</code></p>
Dictionaries	<p>A site dictionary is located at D: _DOC-STD\Fram\ddd-site. dct. User dictionaries generally are in the project directories such as E: \Sawatec_common\sawatec. dct.</p>

⁷ Multiple installations of FM may need multiple licenses. IMHO a newer version of FM does not violate the use of an older version on the same computer - as long as both are not running simultaneously. I assume the same for two language versions. The EULA allows to have a second installation on a different (e.g. laptop) computer, which is a different setup.

User interface

Apply Settings Apply the settings from the various tabs to user's maker. ini file⁸. Use this button for just setting up a project file.

The registry is modified to be able to start the selected FM-version by double clicking on a file.

Apply and start FM Apply the settings to the user's maker. ini and start the selected FM version. The version of FM to be executed is selected in the **General** Tab.

Also in this case the registry is modified to be able to start the selected FM-version by double clicking on a file.

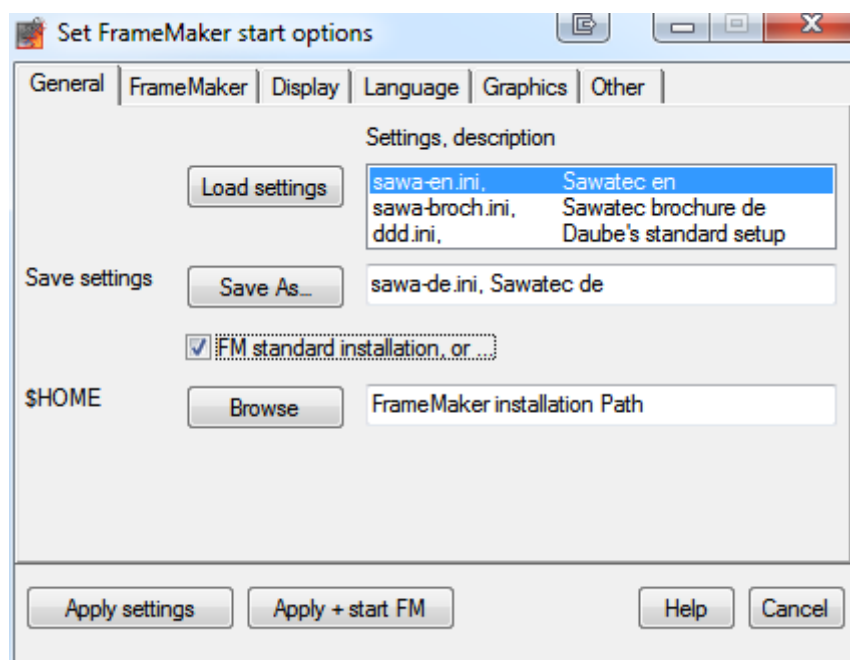
Help A PDF with explanation of the utility is displayed. This PDF is derived from the current document.

Cancel Leave utility without action.

Note: *These buttons are present on each tab. Hence you may save a configuration which is not complete.*

Browse This button opens the common Windows file selection dialogue. The selection is put into the edit box to the right of the button.

General



Load settings Values are loaded from a selectable ini file. This is mainly a copy of the relevant sections and values from a maker. ini to fill this utility with your most used configuration.

You may have more than one of these files in the same directory as the utility (e.g. named ddd. ini , sawatec. ini , etc.)

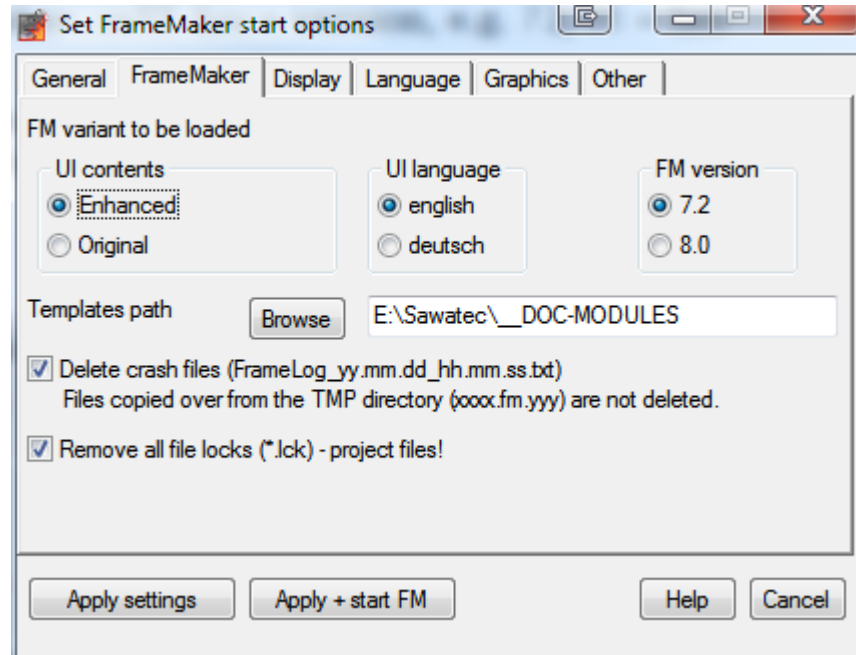
Save settings Save the current settings (values displayed in the various tabs of the utility) to a new or existing ini file for later use.

⁸ Since FM 7.0 a copy of the main maker. ini is placed in the user area (c:\documents & settings\...) for every user.

FM standard installation

Check this box for the D+DD standard installations, where the path name for the FM home directory is
 H: \Adobe\framemaker.vv\l (vv = version, e.g. 7.2, ll = language, e.g. de)

FrameMaker



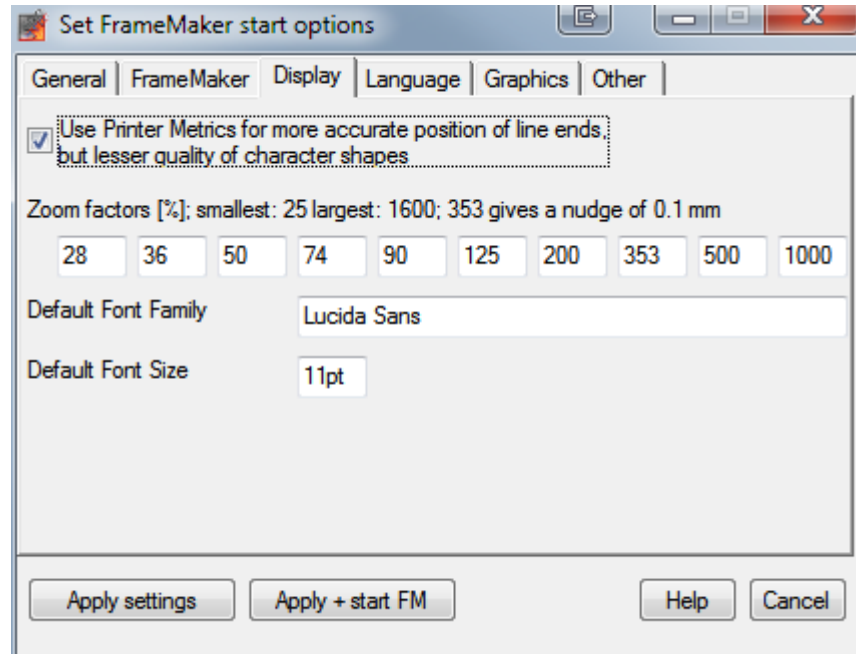
UI contents

Use the original UI for hunting bugs in FM. The enhanced UI provides additional menus and buttons.

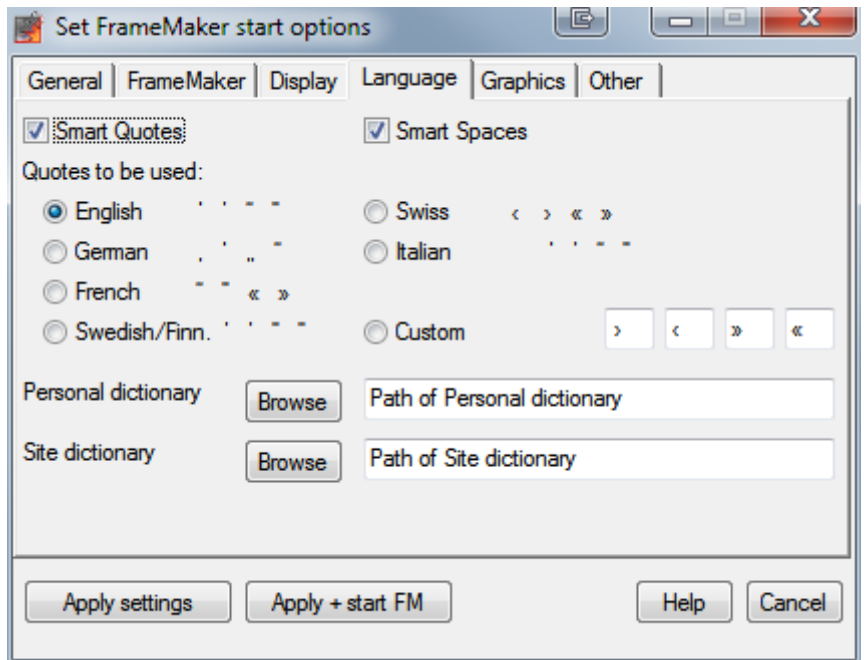
Template path

Templates are project specific.

Display



Language

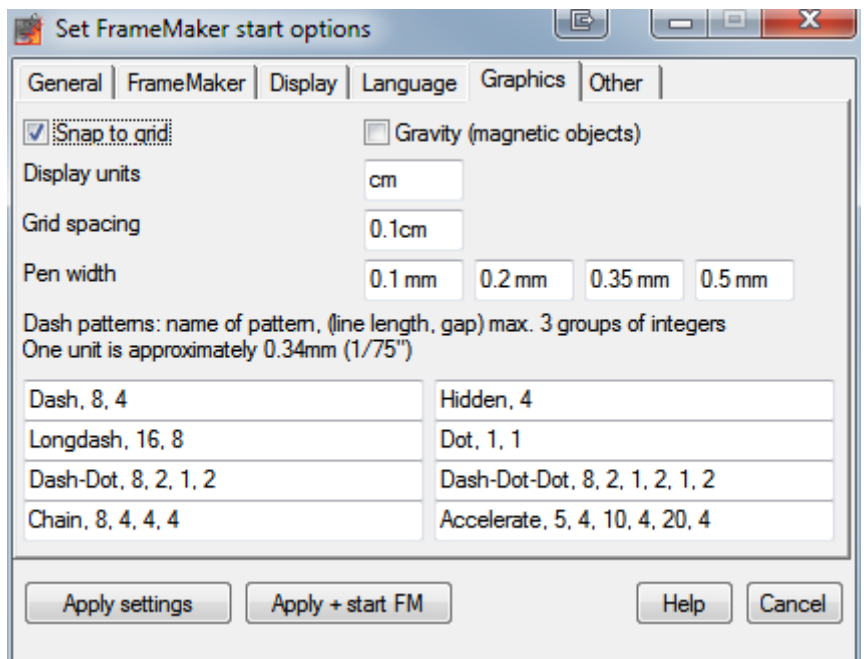


Unfortunately the settings for the “smart quotes” can only contain 4 times 1 character. For French two characters per quote would be required, because a quote must be preceded by a thin space in French.

Personal dictionary

This is used for project dependent dictionaries.

Graphic



Display units

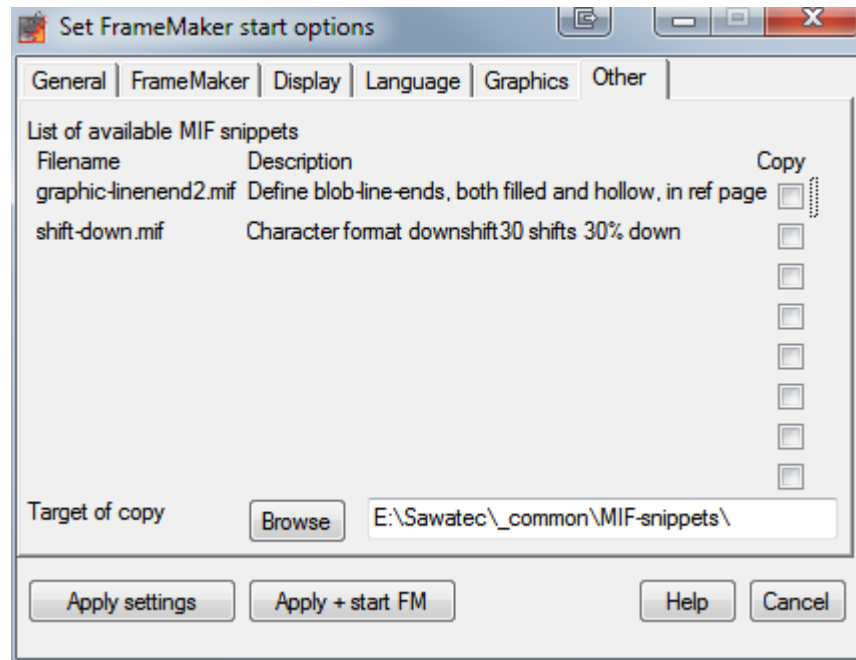
For documents for the US it may be useful to set this to inch.

2016-01-14

E:_DDDprojects\FM-start-options\fm-start-options.fm

DD

Other



Settings prior to start of FM

Some of the settings for the FM session are in the master `maker.ini` file (in `$HOME`), some are copied during the start of FramMaker to the user's directory (Documents and Settings).

maker.ini master file

The master file `$HOME\maker.ini` contains items, which are copied over to the user file at the start of FM (see there).

Other items relevant (or of interest for the idea) to this utility are in these sections:

- Preferences
 - ClipboardFormatsPriorities (?)
 - CrossPlatformFileNaming (?)
 - DefaultRulerCm
 - DefaultGridCm
 - DefaultSnapCm
- Directories
 - TemplateDir
 - Templates (a subdir of the previous)
- Files
 - UserDictionary
 - SiteDictionary
- DashPatterns
 - Entries 1...8
- Spelling
 - SmartQuotes
 - Others may be interesting
- Fonts
 - DisplayUsingPrinterMetrics
 - DefaultFamily

maker.ini user file

This is, for example, located in

`C:\Documents and Settings\Klaus.DDD-KLD\Application Data\Adobe\FramMaker\8.0\maker.ini`

For this utility the following sections contain relevant data:

- Frame
 - ProductInterface
- Preferences
 - ShowQuickAccessBar
 - ShowFormattingBar
 - Snap
 - Display units
 - Grid spacing
 - Gravity

- Zoom
- RememberMissingFontNames
- PenWidths

Other files in User directory

User.dct is also placed here. This is the default user dictionary.

Settings in FrameMaker

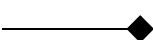
Some interesting options can only be set if FM is running:

Function	Method
Define the default margin between imported graphic and frame	Plugin, FrameScript
Define a custom line-end	FrameScript, MIF-snippet
Define amount of up/downshift for special character format	FrameScript, MIF-snippet

MIF snippets

MIF snippets are cut down MIF files which are imported *by copy*. Some import a reference page to not disturb the document. The name of the reference page must be properly chosen. Even with an existing name (such as Reference) the imported page will be appended to the existing ones.

Graphic items then can be copied from this page or properties can 'picked up'.

- Define a custom line end, for example, a blob: 

Importing parts of a catalogue is also done by copy:

- Define a character format for vertical dislocation of characters (without size modification as in super/subscripting). For example, with
E: \FM-special\s\TIPS\Equation_formula\shift-down.mif
the character format downshift30 is defined:

This is not T_EX, it is just ordinary text in FrameMaker.

Implementation

Specials to consider

Project.ini

The files for the projects are (modified) copies of `fm-start-options.ini` (minus the sections `[fm-start-options]` and `[Projects]`).

fm-start-options.ini

`fm-start-options.ini` contains the default settings for the dialogues in this utility. To ease identification and handling, both `ini` sections and value names are the same as in the `maker.ini` files.

This file defines the defaults for the utility. Some of the entries are only read. Others are changed at the closing of the utility due to changes in the dialogue tabs.

Special values

```
E:\_DDDprojects\FM-start-options\fm-start-options.ini
1 [fm-start-options]
2 indicOriginal=.ori
3 indicMods    =.enh
4 FmUilanguages= en, de
5 FmVersions= 72, 80, 90
6 FmUis=ori,enh
7
8 ; default start values
9 FmUiContents=enh
10 FmUiLang=en
11 FmVersion=80
12 FMPath = H:\Adobe\framemaker.%FmVersion%%FmUiLang%
13
14 [Projects]
15 1 = sawa-en.ini, Sawatec en
16 2 = sawa-broch.ini, Sawatec brochure de
17 3 = ddd.ini,      Daube's standard setup
18
```

Path names of the FM installation must follow a pattern (see `FmPath`).

In the installation path of FM some files and/or directories can be exchanged by the mechanisms of this utility.

The amount of variability is defined by these variables:

```
FmUilanguages= en, de
FmVersions= 71, 72
FmUis=ori, ddd
```

For `FmUis` the first value must be `ori`. The second value is used for the enhanced variants of FM. This can be any string. If only an original installation exists, the comma and second value does not exist.

`FmVersions` defines the valid values for `FmVersion`. There may be only one value, if only one level of FM is installed.

indicOriginal	The standard version of FM is called 'original'. These files and directories are appended with <code>indicOriginal</code> , for example, <code>fmdl.g.dll.ori</code> .
indicMods	Modified items are located in files or directories with the appendix <code>indicMods</code> . For example, a directory with the plugins for enhanced variant is <code>Plugins.ddd</code>
FmUiContents	Modified GUI files are loaded, if this value is set to <code>enh</code> . Original files are loaded, if this value is <code>ori</code> .
FmUiLang, FmVersion	The utility supports the start of various (orderly installed) FM variants. Two parameters are given by FM-level (71, 72 etc) and UI language (<code>en</code> , <code>de</code> etc.)
FMPATH	This file pattern defines how to build the FM installation path for a given variant. With the default pattern <code>H:\Adobe\framemaker.%FmVersion%\FmUiLang%</code> and <code>FmUiLang=de, FmVersion=72</code> the full path for <code>\$FMHOME</code> will be: <code>H:\Adobe\framemaker.8de</code>
Projects	These entries are only numbered to be available in a drop-down list: <code>1 = sawa-en.ini, Sawatec en</code> <code>sawa-en.ini</code> The name of the <i>project</i> - <code>ini</code> file present in the same directory as this utility. <code>Sawatec en</code> Just text for display in the UI of this interface.

Values to be put in the maker.ini file of the user

The section names and `ini`-entries correspond to the entries in `maker.ini`.

```

21
22 [Preferences]
23 DisplayUnits=cm
24 DefaultRulerCm=0.5cm
25 DefaultGridCm=0.2cm
26 DefaultSnapCm=0.1cm
27 PenWidths=0.1mm, 0.2mm, 0.35mm, 0.5mm
28 Zoom=28, 36, 55, 74, 90, 125, 200, 353, 500, 1000
29
30 ClipboardFormatsPriorities=TEXT, RTF, FILE, OLE 2, EMF, META, DIB, BMP, MIF
31 CrossPlatformFileNaming=Windows 9x/2000/NT

```

Pen widths These can be entered in the `maker.ini` file with dimensions. For display in FM and later written to the user's `ini` file the values will be converted to `pt`.

```

33 [Directories]
34 TemplateDir=D:\_doc-std\Frame
35 Templates=D:\_DOC-STD\Frame\FM-templates
36
37 [Files]
38 UserDictionary=
39 SiteDictionary=D:\_DOC-STD\Frame\ddd-site.dct
40
41 [DashPatterns]
42 1=Dash, 8, 4
43 2=Hidden, 4
44 3=Longdash, 16, 8
45 4=Dot, 1, 1
46 5=Dash-Dot, 8, 2, 1, 2
47 6=Dash-Dot-Dot, 8, 2, 1, 2, 1, 2
48 7=Chain, 8, 4, 4, 4
49 8=Phantom, 20, 4, 4, 4, 4, 4
50
51 [Spelling]
52 ; Language defined quotes (according to FM)
53 SmartQuotes-en=\xd4\xd5\xd2\xd3
54 SmartQuotes-de=\xe2\xe4\xe3\xd2
55 SmartQuotes-fr=\xdc\xdd\xc7\xc8
56 SmartQuotes-se=\xd5\xd5\xd3\xd3
57 SmartQuotes-it=\xd4\xd5\xd2\xd3
58 ; Custom quotes - Letter form, hex form:
59 SmartQuotes-aa=›‹›«
60 SmartQuotes-xx=\xdd\xdc\xc8\xc7
61
62 [Fonts]
63 DisplayUsingPrinterMetrics=On
64 DefaultFamily=Lucida Sans, Lucida Serif

```

SmartQuotes-nn To be able to select from the definitions during the execution of the utility, all predefined values are given a suffix indicating the language for which they are intended, for example, SmartQuotes-en.

The user can define a set of arbitrary smart quotes, called Custom quotes. For these two values must be provided: SmartQuotes-aa defining the character form for the presentation of UI of the utility and SmartQuotes-xx defining the hexadecimal form used in FM.

Smart quotes must be presented in the hexadecimal form (fm coding) to be handled by FM 7 ... 9. Only in FM 8 and above it is possible to use UNICODE.characters.

Handling MIF snippets

Location	MIF snippets are located in the same directory as the utility. On demand they are copied to the target directory. This is normally a project directory.
Description	<p>The first comment line in the MIF snippet is read to get the description, for example:</p> <pre><MIFFile 5.50> # Character format downshi ft30 shi fts 30% down <FontCatalog <Font <FTag `downshi ft30' > <FPosition FNormal > <FDY 30.0%> <FLocked Yes> > # end of Font > # end of FontCatalog</pre>
User's task	The utility does not import the snippets into the frame maker files of the user. This is the task of the user.